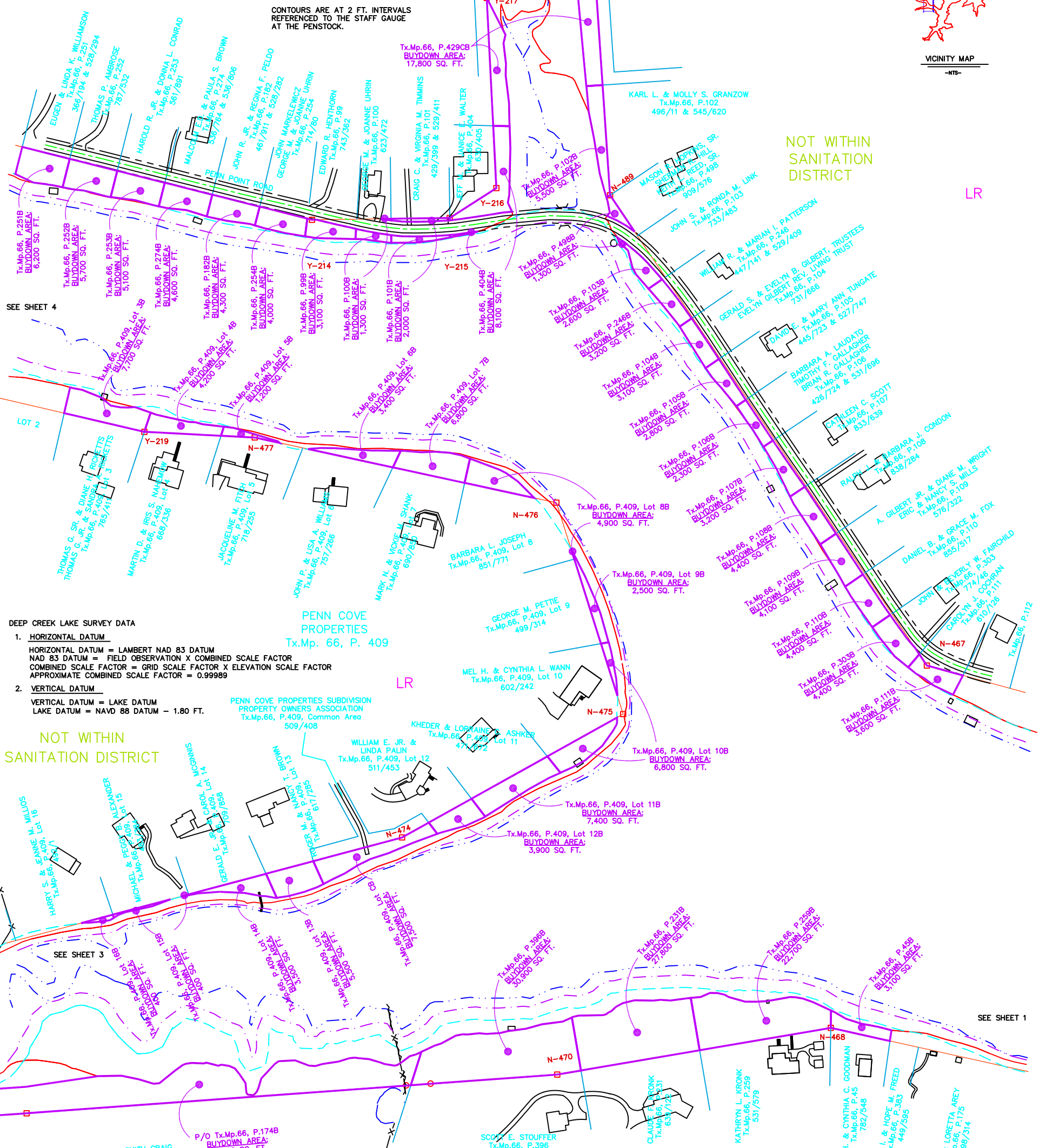
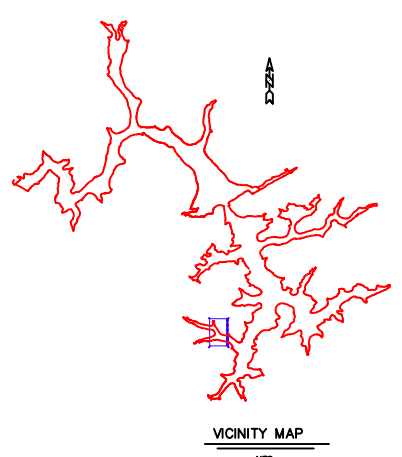


- LEGEND**
- CONCRETE MONUMENT SET
 - CONCRETE MONUMENT FOUND
 - MONUMENT LINE
 - 2466 CONTOUR LINE
 - 2462 CONTOUR LINE
 - 25 FT. SAFETY LINE
 - BUYDOWN AREAS
 - LAKE RESIDENTIAL
 - TOWN CENTER
 - TOWN RESIDENTIAL
 - MONUMENT TO BE SET
 - CALCULATED MONUMENT LOCATIONS THAT CANNOT BE SET
 - 1" REBAR WITH ALUMINUM CAP SET
 - 2" BRASS DISC SET
- CONTOURS ARE AT 2 FT. INTERVALS REFERENCED TO THE STAFF GAUGE AT THE PENSTOCK.



DEEP CREEK LAKE SURVEY DATA

1. **HORIZONTAL DATUM**
 HORIZONTAL DATUM = LAMBERT NAD 83 DATUM
 NAD 83 DATUM = FIELD OBSERVATION X COMBINED SCALE FACTOR
 COMBINED SCALE FACTOR = GRID SCALE FACTOR X ELEVATION SCALE FACTOR
 APPROXIMATE COMBINED SCALE FACTOR = 0.99989

2. **VERTICAL DATUM**
 VERTICAL DATUM = LAKE DATUM
 LAKE DATUM = NAVD 88 DATUM - 1.80 FT.

NOT WITHIN SANITATION DISTRICT

NOT WITHIN SANITATION DISTRICT

SURVEY CALLS

| CONC.MON. | BEARING | DISTANCE |
|-----------|------------|----------|
| N211-N468 | N 77°31' W | 911.27' |
| N468-N470 | S 80°19' W | 566.54' |
| N470-N471 | S 85°50' W | 1482.82' |
| N473-N474 | N 75°03' E | 1369.61' |
| N474-N475 | N 60°50' E | 517.04' |
| N475-N476 | N 17°32' W | 452.71' |
| N476-N477 | N 77°48' W | 630.31' |
| N477-Y219 | N 87°03' W | 225.70' |
| Y219-Y224 | N 76°53' W | 607.75' |
| N480-Y214 | S 75°54' E | 775.79' |
| Y214-Y215 | N 89°16' E | 281.36' |
| Y215-Y216 | N 57°19' E | 113.08' |
| Y216-Y217 | N 02°55' W | 388.95' |
| Y217-Y218 | N 62°04' E | 245.35' |
| Y218-N489 | S 03°53' E | 519.14' |
| N489-N467 | S 33°57' E | 1158.15' |
| N467-N465 | S 74°40' E | 374.83' |

PENELEC CALLS

| CONC.MON.NO. | BEARING | DISTANCE |
|--------------|-------------|-------------|
| N-211 | N 78° 34' W | 912.90 FT. |
| N-468 | S 79° 12' W | 571.90 FT. |
| N-470 | S 88° 24' W | 1483.20 FT. |
| N-473 | N 73° 45' E | 1359.50 FT. |
| N-474 | N 79° 17' E | 513.00 FT. |
| N-475 | N 18° 00' W | 453.20 FT. |
| N-476 | N 79° 09' W | 630.20 FT. |
| N-477 | N 88° 01' W | 230.70 FT. |
| N-479 | N 79° 00' W | 608.20 FT. |
| N-480 | S 76° 35' E | 775.60 FT. |
| Y-214 | S 89° 23' E | 280.00 FT. |
| Y-215 | N 51° 52' E | 118.20 FT. |
| Y-216 | N 04° 31' W | 393.20 FT. |
| Y-217 | N 61° 46' E | 245.20 FT. |
| Y-218 | S 05° 30' E | 518.20 FT. |
| N-489 | S 35° 11' E | 1157.80 FT. |
| N-467 | S 75° 59' E | 376.60 FT. |

COORDINATE SCHEDULE

| Mon. | North | East |
|------|-----------|-----------|
| N467 | 663895.50 | 659696.41 |
| N475 | 663796.36 | 659076.27 |
| Y215 | 664809.61 | 658722.14 |
| N474 | 663544.37 | 658624.80 |
| N489 | 664856.12 | 659049.49 |
| Y218 | 665374.06 | 659014.25 |
| N476 | 664228.05 | 658939.92 |
| N477 | 664361.24 | 658323.85 |
| Y216 | 664870.87 | 658817.31 |
| Y217 | 665259.12 | 658797.50 |
| Y219 | 664372.85 | 658098.44 |
| Y214 | 664805.97 | 658440.80 |
| N468 | 663155.41 | 659500.08 |
| N470 | 663060.08 | 658941.62 |

© COPYRIGHT - 2000 BY MORGAN C. FRANCE, L.S., P.E. ALL RIGHTS RESERVED

SHEET NO. 2V

DRAWING 2V, PAWN RUN COVE

DEEP CREEK PROJECT
BUY DOWN SURVEY

APPROVED BY: MORGAN C. FRANCE
 PROJ. NO. 11/27/01
 DATE: 7/07/00 at 10:20
 12/18/01

PREPARED BY: MORGAN C. FRANCE, L.S., P.E.
 10 North Third Street
 Oakland, Maryland 21550
 (301) 334-2305

PROJECT: DEEP CREEK PROJECT BUY DOWN SURVEY

DATE: 7/07/00

REVISIONS: 12/18/01

DRAWN BY: SUSAN N. EVANS PERANDI
 and MARGARET A. JORDAN
 DWG: PWRN2V
 123\DATA\EP\PROJECTS\JUL2000\PWRN2V